

Balanced: Golden Rainbow | GLRBX & GLRIX

James Investment Research, Inc., P.O. Box 8, Alpha, Ohio 45301
www.jamesfunds.com | info@jamesfunds.com | 1-800-99-JAMES



Advised by James Investment Research, Inc.

MARCH 31, 2018

Fund Info

Fund Statistics as of March 31, 2018

	RETAIL	INSTITUTIONAL
Ticker Symbol	GLRBX	GLRIX
Cusip	470259102	470259821
Benchmark Index	*Balanced Blend	
No. Stocks in Portfolio	378	378
Assets	\$1,653.3 Mil.	\$956.9 Mil.
Median Capitalization	\$4,288.0 Mil.	\$4,288.0 Mil.
Price/Earnings	15.59	15.59
Price/Book	5.03	5.03
Beta [^]	0.80	0.80

* 25% S&P 500[®] / 25% Russell 2000[®] / 50% Barclays Capital U.S. Intermediate Government/Credit Bond Index

[^] A quantitative measure of volatility.

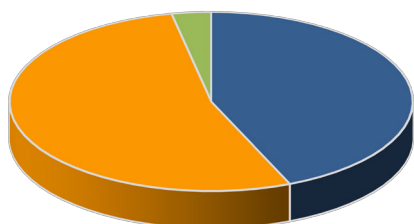
Fund Operating Expenses Prospectus 11/01/2017 (Expenses that are deducted from Fund assets)

	RETAIL	INSTITUTIONAL
Management Fee	0.64%	0.64%
Distribution (12b-1) Fees	0.25%	0.00%
Other Expenses	0.07%	0.07%
Acquired Fund Fees and Expenses	0.01%	0.01%
Total Annual Fund Operating Expenses ^(a)	0.97%	0.72%

Top Ten Equity Holdings as of March 31, 2018

JPMorgan Chase & Co	1.16%
Magna International Inc	1.12%
Celanese Corp	0.96%
United Rentals Inc	0.96%
Best Buy Co	0.91%
Avery Dennison Corp	0.89%
Pfizer Inc	0.88%
Unum Group	0.84%
Intel Corp	0.68%
Anthem Inc	0.67%

Asset Allocation



■ Equity - 43.63% ■ Fixed - 53.23% ■ Cash - 3.14%

As a % of total portfolio as of 3/31/18.

Investment Objective

The James Balanced: Golden Rainbow Fund seeks to provide total return through a combination of growth and income and preservation of capital in declining markets.

Investment Strategy & Process

Under normal circumstances, the James Balanced: Golden Rainbow Fund invests primarily in equity securities of foreign and domestic companies that the Adviser believes are undervalued, and in fixed income securities. The Fund will normally hold both equity securities and fixed income securities, with at least 25% of its assets in equity securities and at least 25% of its assets in fixed income securities.

Equity securities that the Fund will principally invest in are common stocks, preferred stocks and exchange traded funds ("ETFs") that invest primarily in equity securities. Some or all of the equity portion of the Fund may be invested in small and micro capitalization companies. Fixed income securities that the Fund will principally invest in are U.S. government securities, corporate bonds, municipal bonds and/or sovereign bonds of any maturity, as well as ETFs that invest primarily in such securities. Any non-US government securities in the Fund's portfolio will consist primarily of issues rated "Baa2" or better by Moody's Investors Service, Inc. ("Moody's") or "BBB" or better by Standard & Poor's Ratings Group ("S&P") and unrated securities determined by the Adviser to be of equivalent quality, as well as high quality money market instruments. The Fund will attempt to provide total return in excess of the rate of inflation over the long term (3 to 5 years).

Morningstar Rating™

Overall Rating ★★★★★
3 Year Rating ★
5 Year Rating ★★
10 Year Rating ★★★★★

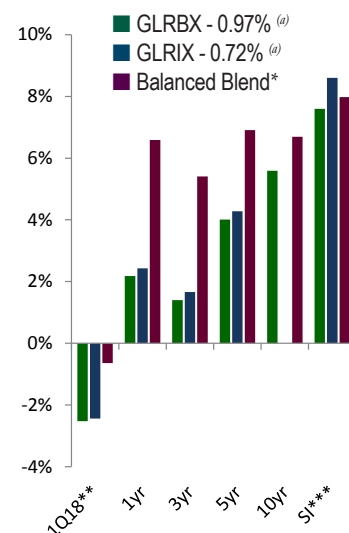
The Morningstar Star Rating™ for the James Balanced: Golden Rainbow Fund (GLRBX) is based on risk-adjusted returns as of 3/31/18 in the conservative allocation category out of 423 funds overall and in the last 3 years, 354 in the last 5 years, and 261 in the last 10 years.

The overall Morningstar Star Rating™ for a fund is derived from a weighted average of the performance figures associated with its three, five and ten year Morningstar rating metrics. ©2018 Morningstar, Inc. All Rights Reserved.

Performance as of March 31, 2018

	1Q18**	1yr	3yr	5yr	10yr	SI***
GLRBX	-2.52%	2.18%	1.40%	4.01%	5.59%	7.60%
GLRIX	-2.44%	2.43%	1.66%	4.28%	-	8.60%
Balanced Blend*	-0.64%	6.59%	5.41%	6.91%	6.69%	7.98%

Investors should consider the investment objectives, risks, and charges and expenses of the James Advantage Funds (the Funds) carefully before investing; this and other information about the Funds is in the prospectus, which can be obtained by calling 1-800-99-JAMES. Read the prospectus carefully before you invest. The performance data quoted represents past performance; past performance does not guarantee future results. The investment return and principal value of an investment will fluctuate so that an investor's shares, when redeemed, may be worth more or less than their original cost. The Funds' current performances may be lower or higher than the performance data quoted. Investors may obtain performance information current to the last month-end, within 7 business days, at www.jamesfunds.com. *25% S&P 500[®] / 25% Russell 2000[®] / 50% Barclays Capital U.S. Intermediate Government/Credit Bond Index. **1st quarter numbers are not annualized. (All other numbers are average annual returns.) ***Since Inception GLRBX and Blend 7/1/91; GLRIX 3/2/09. ^(a)Indicates total annual fund operating expenses.



Additional Performance figures can be found at JamesFunds.com.

Balanced: Golden Rainbow | GLRBX & GLRIX

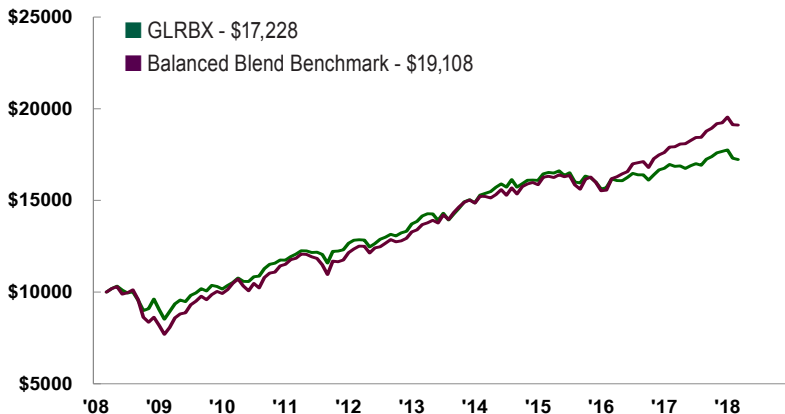


James Investment Research, Inc., P.O. Box 8, Alpha, Ohio 45301
 www.jamesfunds.com | info@jamesfunds.com | 1-800-99-JAMES

Advised by James Investment Research, Inc.

MARCH 31, 2018

Growth of \$10,000 as of March 31, 2018



This performance is based on reinvestment of all dividends and distributions and does not reflect the deduction of taxes that a shareholder would pay on any distributions or the redemption of Fund shares.

GLRBX Yearly Returns

2008	-5.53%
2009	7.12%
2010	14.06%
2011	4.77%
2012	8.13%
2013	12.97%
2014	7.12%
2015	-0.68%
2016	4.17%
2017	6.04%

Investment Committee

- Dr. Frank James, Ph.D**
44 Years
Founder and Chairman of James Investment Research
Senior Advisor to the Investment Committee
- Barry R. James, CFA, CIC**
30 Years
President/CEO and Portfolio Manager with James Investment Research
President of the James Advantage Funds
- Thomas L. Mangan, MBA**
22 Years
Senior Vice President and Portfolio Manager,
VP and CFO of James Advantage Funds
- David W. James, CFA**
36 Years
Senior Vice President and Portfolio Manager
- Ann M. Shaw, CFP**
38 Years
Chief Operating Officer and Portfolio Manager
- R. Brian Culpepper, MBA, CMFC**
20 Years
Vice President and Portfolio Manager
- Brian Shepardson, CFA, CIC**
17 Years
First Vice President and Portfolio Manager
- Trent D. Dysert, CFA**
10 years
Portfolio Manager
- Matthew G. Watson, CFA, CPA**
9 years
Portfolio Manager

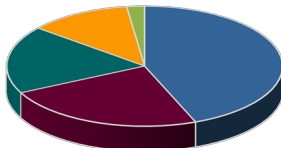
Equity Sector Diversification



- Finance - 8.92%
- Consumer Cyclical - 8.78%
- Technology - 7.80%
- Industrial - 5.52%
- Consumer Non-Cyclical - 4.76%

As a % of total portfolio as of 3/31/18.
Top 5 Sectors.

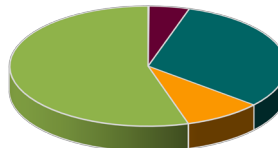
Fixed Sector Diversification



- US Treasury - 22.85%
- Corporate - 12.30%
- Agencies - 9.48%
- Municipal - 6.24%
- MBS - 1.08%

As a % of total portfolio as of 3/31/18.
Top 5 Sectors.

Market Cap Breakout



- (Less than \$250 mil) - 0.09%
- (\$250 - \$1,000 mil) - 4.72%
- (\$1,000 - \$4,000 mil) - 31.37%
- (\$4,000 - \$7,000 mil) - 9.13%
- (Greater than \$7,000 mil) - 54.69%

As a % of total portfolio as of 3/31/18.

The Blended Index is comprised of a 25% weighting in the S&P 500® Index, a 25% weighting in the Russell 2000® Index (a widely recognized index of market activity based on the aggregate performance of U.S. domiciled, publicly traded common stocks, which as of December 31, 2016, the largest market capitalization of the companies included in the Russell 2000® Index was \$5.48 billion) and a 50% weighting in the Barclays Capital U.S. Intermediate Government/Credit Bond Index (an unmanaged index generally representative of intermediate term bonds).

S&P 500 refers to the Standard and Poor's 500® Index with dividends reinvested. It generally represents the aggregate price changes in the largest 500 publicly traded companies. One cannot invest directly in an index.

Price/Earnings ratio is a valuation of a company's current share price compared to its per-share earnings.

Price/Book ratio is a ratio used to compare a stock's market value to its book value. It is calculated by dividing the current closing price of the stock by the latest quarter's book value per share.

The Morningstar Rating™ for funds, or "star rating", is calculated for managed products (including mutual funds, variable annuity and variable life subaccounts, exchange-traded funds, closed-end funds, and separate accounts) with at least a three-year history. Exchange-traded funds and open-ended mutual funds are considered a single population for comparative purposes. It is calculated based on a Morningstar Risk-Adjusted Return measure that accounts for variation in a managed product's monthly excess performance, placing more emphasis on downward variations and rewarding consistent performance. The Morningstar Rating does not include any adjustment for sales loads. The top 10% of products in each product category receive 5 stars, the next 22.5% receive 4 stars, the next 35% receive 3 stars, the next 22.5% receive 2 stars, and the bottom 10% receive 1 star. The Overall Morningstar Rating for a managed product is derived from a weighted average of the performance figures associated with its three-, five-, and 10-year (if applicable) Morningstar Rating metrics. The weights are: 100% three-year rating for 36-59 months of total returns, 60% five-year rating/40% three-year rating for 60-119 months of total returns, and 50% 10-year rating/30% five-year rating/20% three-year rating for 120 or more months of total returns. While the 10-year overall star rating formula seems to give the most weight to the 10-year period, the most recent three-year period actually has the greatest impact because it is included in all three rating periods.

As of 3/31/18 James Balanced: Golden Rainbow Fund (GLRBX) was rated against the following numbers of U.S. domiciled Conservative Allocation funds over the following time periods: 423 funds in the last three years, 354 in the last five years, and 261 in the last 10 years. With respect to these Conservative Allocation funds, the James Balanced: Golden Rainbow Fund received a Morningstar Rating™ of 1 stars for the three year period, 2 stars for the five year period, and 4 stars for the ten year period.

Ratings are based on risk-adjusted return. The Overall Morningstar Rating for a fund is derived from a weighted average of the performance figures associated with its 3, 5 and 10-year (if applicable) Morningstar Rating metrics. (Overall and 3-years 423 funds)

Fund holdings and sector weightings are subject to change without notice. The average annual total returns assume reinvestment of income, dividends and capital gains distributions and reflect changes in net asset value. The principal value and investment return will vary with market conditions so that an investor's shares, when redeemed, may be worth more or less than their original cost. Small-Cap investing involves greater risk not associated with investing in more established companies, such as greater price volatility, business risk, less liquidity and increased competitive threat. You should note that the James Advantage Funds are professionally managed mutual funds while the indices are unmanaged, do not incur expenses and are not available for investment. James Advantage Funds distributed by ALPS Distributors, Inc., 1290 Broadway, Ste 1100, Denver, CO 80203. Barry R. James, Thomas L. Mangan, David W. James, Ann M. Shaw, R. Brian Culpepper, Brian Shepardson, Trent D. Dysert, and Matthew G. Watson are registered representatives of ALPS Distributors, Inc.

JAF000513



NOVEMBER 1,

SUMMARY
PROSPECTUS

2017

JAMES BALANCED: GOLDEN RAINBOW FUND

Retail Class Shares Ticker: GLRBX

Before you invest, you may want to review the Fund's prospectus, which contains more information about the Fund and its risks. The Fund's prospectus and Statement of Additional Information, both dated November 1, 2017, are incorporated by reference into this Summary Prospectus. For a free paper or electronic copy of the Fund's prospectus and other information, go to <http://www.jamesfunds.com/forms-prospectus.php>, call 1-800-99-JAMES (1-800-995-2637), email a request to Info@jamesfunds.com or ask any financial intermediary who offers shares of the Fund.

JAMES BALANCED: GOLDEN RAINBOW FUND

Retail Class Shares: GLRBX

INVESTMENT OBJECTIVE

James Balanced: Golden Rainbow Fund (the "Fund") seeks to provide total return through a combination of growth and income and preservation of capital in declining markets.

FEES AND EXPENSES OF THE FUND

This table describes the fees and expenses that you may pay if you buy and hold shares of the Fund.

Annual Fund Operating Expenses

(expenses that you pay each year as a percentage of the value of your investment)

Management Fee	0.64%
Distribution (12b-1) Fees	0.25%
Other Expenses	0.07%
Acquired Fund Fees and Expenses ¹	0.01%
Total Annual Fund Operating Expenses	0.97%

¹ *Acquired Fund Fees and Expenses are not included as expenses in the Ratio of Net Expenses to Average Net Assets found in the "Financial Highlights" section of this prospectus.*

EXAMPLE:

The Example is intended to help you compare the cost of investing in the Fund with the cost of investing in other mutual funds. The Example assumes that you invest \$10,000 in the Fund for the time period indicated and then redeem all of your shares at the end of those periods. The Example also assumes that your investment has a 5% return each year and that the Fund's operating expenses remain the same. Although your actual costs may be higher or lower, based on these assumptions your costs would be:

James Balanced:	1 Year	3 Years	5 Years	10 Years
Golden Rainbow Fund	\$99	\$309	\$536	\$1,189

Portfolio Turnover: The Fund pays transaction costs, such as commissions, when it buys and sells securities (or "turns over" its portfolio). A higher portfolio turnover may indicate higher transaction costs. These costs, which are not reflected in annual fund operating expenses or in the Example, affect the Fund's performance. A higher turnover may also result in more income taxes for a shareholder when Fund shares are held in a taxable account. During the most recent fiscal year, the Fund's portfolio turnover rate was 46% of the average value of its portfolio. The portfolio turnover of the Fund may vary considerably from year to year. From time to time, the Fund's portfolio turnover rate may be relatively high, as compared to other mutual funds, and the Fund currently anticipates the rate may exceed 100% percent in the near future.

PRINCIPAL INVESTMENT STRATEGIES

Under normal circumstances, the Fund invests primarily in equity securities of foreign and domestic companies that the Adviser believes are undervalued, and in fixed income securities. The Fund will normally hold both equity securities and fixed income securities, with at least 25% of its assets in equity securities and at least 25% of its assets in fixed income securities.

Equity securities that the Fund will principally invest in are common stocks, preferred stocks and exchange traded funds (“ETFs”) that invest primarily in equity securities. Some or all of the equity portion of the Fund may be invested in small and micro capitalization companies. Fixed income securities that the Fund will principally invest in are U.S. government securities, corporate bonds, municipal bonds and/or sovereign bonds of any maturity, as well as ETFs that invest primarily in such securities. Any non-U.S. government securities in the Fund’s portfolio will consist primarily of issues rated “Baa2” or better by Moody’s Investors Service, Inc. (“Moody’s”) or “BBB” or better by Standard & Poor’s Ratings Group (“S&P”) and unrated securities determined by the Adviser to be of equivalent quality, as well as high quality money market instruments. The Fund will attempt to provide total return in excess of the rate of inflation over the long term (3 to 5 years). The Fund may add more securities to the portfolio to help increase performance and allow the sector weights to vary according to the number of highly ranked securities in that sector.

PRINCIPAL RISKS

All investments carry a certain amount of risk and the Fund cannot guarantee that it will achieve its investment objective. An investment in the Fund is not a deposit or obligation of any bank, is not endorsed or guaranteed by any bank, and is not insured by the Federal Deposit Insurance Corporation (FDIC) or any other government agency. You may lose money by investing in the Fund. Below are the main risks of investing in the Fund.

Equity Market Risk: Overall stock market risks may affect the value of the Fund. Factors such as domestic economic growth and market conditions, interest rate levels and political events affect the securities markets. When the value of the Fund’s investments goes down, your investment in the Fund decreases in value and you could lose money.

Exchange Traded Fund Risk: An ETF may trade at a discount to its net asset value. Investors in the Fund will indirectly bear fees and expenses charged by the underlying ETFs in which the Fund invests in addition to the Fund’s direct fees and expenses. The Fund will also incur brokerage costs when it purchases shares of ETFs. In addition, the Fund will be affected by losses of the underlying ETF and the level of risk arising from the investment practices of the underlying ETF. Inverse and leveraged ETFs use investment techniques and financial instruments that may be considered aggressive, including the use of derivative transactions and short selling techniques. To the extent that the Fund invests in ETFs that invest in commodities, the demand and supply of these commodities may fluctuate widely. Commodity ETFs may use derivatives, which exposes them to further risks, including counterparty risk (i.e., the risk that the institution on the other side of the trade will default).

Fixed Income Risk: The Fund invests in fixed income securities. These securities will increase or decrease in value based on changes in interest rates. If rates increase, the value of the Fund’s fixed income securities generally will decline, and those securities with longer terms generally will decline more. Your investment will decline in value if the value of the Fund’s investments decreases. Investors should be aware that fixed income yields at or close to historic lows present enhanced price risk should interest rates rise considerably from these low levels. Price volatility at low yields is greater than investors may be used to when interest rates are at levels considered normal in an historical sense. There is a risk that issuers and counterparties will not make payments on fixed income securities and repurchase agreements held by the Fund. Such defaults could result in losses to the Fund. Securities with lower credit quality have a greater risk of default. In addition, the credit quality of securities held by

the Fund may be lowered if an issuer's financial condition changes. Lower credit quality may lead to greater volatility in the price of a security and of shares of the Fund. Lower credit quality also may affect liquidity and make it difficult for the Fund to sell the security. Recent financial trends and regulatory changes have created a fixed income market with lower dealer capacity relative to the asset size of some fixed income markets. This may lead to increased trading costs, decreased liquidity and greater market volatility for some fixed income assets in general, especially lower quality bonds. The Funds do not generally buy non-investment grade bonds.

Foreign Investment Risk: Foreign investing involves risks not typically associated with U.S. investments. These risks include, among others, adverse fluctuations in foreign currency values as well as adverse political, social and economic developments affecting a foreign country. In addition, foreign investing involves less publicly available information, and more volatile or less liquid securities markets. Investments in foreign countries could be affected by factors not present in the U.S., such as restrictions on receiving the investment proceeds from a foreign country, foreign tax laws and potential difficulties in enforcing contractual obligations. Foreign accounting may be less transparent than U.S. accounting practices and foreign regulation may be inadequate or irregular. Owning foreign securities could cause the Fund's performance to fluctuate more than if it held only U.S. securities. This Fund may hold a significant percentage of its assets in foreign securities, including global shares, ADRs and ETFs that hold such securities. This will make portfolio returns more correlated to fluctuations in the U.S. dollar versus foreign currencies and to geopolitical events outside of the United States. Ongoing concerns regarding the economies of certain European countries and/or their sovereign debt, as well as the possibility that one or more countries might leave the European Union (the "EU"), create risks for investing in the EU. The risk of investing in securities in the European markets may also be heightened due to the referendum in which the United Kingdom (the "UK") voted to exit the EU (known as "Brexit"). While the full impact of Brexit is unknown, the current uncertainty and related future developments could have a negative impact on both the UK economy and the economies of other countries in Europe, as well as greater volatility in the global financial and currency markets.

Management Risk: The Adviser's judgments about the attractiveness, value and potential appreciation of a particular asset class or individual security in which the Fund invests may prove to be incorrect. The Fund may experience losses regardless of the overall performance of the market.

Municipal Securities Risk: The power or ability of an issuer to make principal and interest payments on municipal securities may be materially adversely affected by economic conditions, litigation or other factors. The Fund's right to receive principal and interest payments may be subject to the provisions of bankruptcy, insolvency and other laws affecting the rights and remedies of creditors, as well as laws, if any, which may be enacted by Congress or state legislatures extending the time for payment of principal and/or interest or imposing other constraints upon the enforcement of such obligations. In addition, substantial changes in federal income tax laws could cause municipal security prices to decline because the demand for municipal securities is strongly influenced by the value of tax exempt income to investors.

Portfolio Turnover Risk: The Fund may have a higher portfolio turnover rate. A high portfolio turnover rate can result in increased brokerage commission costs and may expose taxable shareholders to potentially larger or smaller current income tax liability.

Sector Risk: Equity securities within the same group of industries may decline in price due to sector-specific market or economic developments. If the Adviser invests a significant portion of the Fund's assets in a particular sector, the Fund is subject to the risk that companies in the same sector are likely to react similarly to legislative or regulatory changes, adverse market conditions and/or increased competition affecting that market segment. This may cause the Fund's net asset value to fluctuate more than that of a fund that does not concentrate in a particular sector.

Small Cap and Micro Cap Company Risk: Smaller capitalization companies may experience higher failure rates than do larger capitalization companies. In addition, smaller companies may be more vulnerable to economic, market and industry changes. As a result, share price changes may be more sudden or erratic than the prices of other equity securities, especially over the short term. Such companies may have limited product lines, markets or financial resources and may lack management depth. The trading volume of securities of smaller capitalization companies is normally less than that of larger capitalization companies, and therefore may disproportionately affect their market price, tending to make them fall more in response to selling pressure than is the case with larger capitalization companies. Some small capitalization stocks may be illiquid. These risks may be enhanced for micro cap securities. Many micro cap companies tend to be new and have no proven track record. Some of these companies have no assets or operations, while others have products and services that are still in development or have yet to be tested in the market. Because micro cap stocks trade in low volumes, any size of trade can have a large percentage impact on the price of the stock.

Sovereign Debt Risk: The Fund may invest in sovereign debt obligations. Investment in sovereign debt obligations involves special risks not present in corporate debt obligations. The issuer of the sovereign debt or the governmental authorities that control the repayment of the debt may be unable or unwilling to repay principal or interest when due, and the Fund may have limited recourse in the event of a default. During periods of economic uncertainty, the market prices of sovereign debt, and the Fund's net asset value, may be more volatile than prices of U.S. debt obligations.

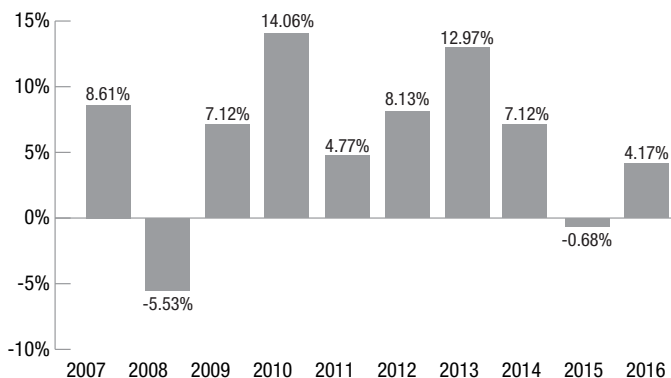
PERFORMANCE

The bar chart and performance table below illustrate the variability of the returns of the Retail Class of the Fund, which provides some indication of the risks of investing in the Fund by showing changes in the Fund's performance from year to year and by showing how the Fund's average annual total returns over time compare with the returns of a broad-based securities market index. Of course, the Fund's past performance is not necessarily an indication of how the Fund will perform in the future. Updated performance information is available at no cost by visiting www.jamesfunds.com or by calling 1-800-99-JAMES (1-800-995-2637).

JAMES BALANCED: GOLDEN RAINBOW FUND

Retail Class Shares: GLRBX

Annual Total Returns (Retail Class Shares) (Years ended December 31):



Best Quarter	3rd Quarter 2009	7.45%
Worst Quarter	1st Quarter 2009	-7.09%

The Fund's Retail Class Shares year-to-date return as of September 30, 2017 was 3.49%.

Average Annual Total Returns (as of December 31, 2016)

James Balanced: Golden Rainbow Fund – Retail Class	One Year	Five Years	Ten Years
Return Before Taxes	4.17%	6.25%	5.93%
Return After Taxes on Distributions	3.74%	5.62%	5.31%
Return After Taxes on Distributions and Sale of Fund Shares	2.65%	4.85%	4.66%
S&P 500® Index (reflects no deduction for fees, expenses or taxes)	11.96%	14.66%	6.95%
Blended (25% S&P 500® Index; 25% Russell 2000® Index; 50% Barclays Capital Intermediate Government/Credit Bond Index) (reflects no deduction for fees, expenses or taxes)	9.45%	8.28%	5.88%

After-tax returns are calculated using the highest individual federal marginal income tax rates then in effect for the character of income in question (as ordinary income or long-term gain) and do not reflect the impact of state and local taxes. Actual after-tax returns depend on a shareholder's tax situation and may differ from those shown. The after-tax returns are not relevant if you hold your Fund shares in tax-deferred arrangements, such as 401(k) plans or individual retirement accounts ("IRA").

PORTFOLIO MANAGEMENT

James Investment Research, Inc. (the "Adviser") is the investment adviser to the Fund.

The Fund is managed by an investment committee of the Adviser consisting of the following nine members:

Dr. Frank James, PhD Senior Advisor Since 2016	Barry James, CFA, CIC Portfolio Manager Since 1991	Ann M. Shaw, CFP Portfolio Manager Since 1991	Thomas L. Mangan Portfolio Manager Since 1994
David W. James, CFA Portfolio Manager Since 1991	R. Brian Culpepper Portfolio Manager Since 1998	Brian Shepardson, CFA, CIC Portfolio Manager Since 2001	Trent D. Dysert, CFA Portfolio Manager Since 2014
Matthew G. Watson, CFA, CPA Portfolio Manager Since 2014			

BUYING AND SELLING FUND SHARES

Minimum Initial Investment	Minimum Additional Investment
\$2,000	None
\$500 (<i>tax-deferred accounts</i>)	

You can buy and redeem shares of the Fund on any day the NYSE is open for business by calling 1-800-99-JAMES (1-800-995-2637); by writing to The James Advantage Funds, P.O. Box 786, Denver, CO 80201; via overnight mail at 1290 Broadway, Suite 1100, Denver, CO 80203; via the Fund's website at www.jamesfunds.com; through a financial intermediary that has established an agreement with the Fund's distributor; or if you are a client of the Adviser.

DIVIDENDS, CAPITAL GAINS AND TAXES

A Fund's distributions may be taxable as ordinary income or capital gains, or, in some cases, qualified dividend income subject to tax at maximum federal rates that apply to long-term capital gains, except when your investment is in an IRA, 401(k) or other tax-advantaged investment plan. Subsequent withdrawals from such a tax-advantaged investment plan may be subject to federal income tax.

POTENTIAL CONFLICTS OF INTEREST

If you purchase a Fund through a broker-dealer or other financial intermediary (such as a bank), the Fund and its related companies may pay the intermediary for the sale of Fund shares and related services. These payments may create a conflict of interest by influencing the broker-dealer or other intermediary and your salesperson to recommend the Fund over another investment. Ask your salesperson or visit your financial intermediary's website for more information.





NOVEMBER 1,

SUMMARY
PROSPECTUS

2017

JAMES BALANCED: GOLDEN RAINBOW FUND

Institutional Class Shares Ticker: GLRIX

Before you invest, you may want to review the Fund's prospectus, which contains more information about the Fund and its risks. The Fund's prospectus and Statement of Additional Information, both dated November 1, 2017, are incorporated by reference into this Summary Prospectus. For a free paper or electronic copy of the Fund's prospectus and other information, go to <http://www.jamesfunds.com/forms-prospectus.php>, call 1-800-99-JAMES (1-800-995-2637), email a request to Info@jamesfunds.com or ask any financial intermediary who offers shares of the Fund.

JAMES BALANCED: GOLDEN RAINBOW FUND

Institutional Class Shares: GLRIX

INVESTMENT OBJECTIVE

James Balanced: Golden Rainbow Fund (the "Fund") seeks to provide total return through a combination of growth and income and preservation of capital in declining markets.

FEES AND EXPENSES OF THE FUND

This table describes the fees and expenses that you may pay if you buy and hold shares of the Fund.

Annual Fund Operating Expenses

(expenses that you pay each year as a percentage of the value of your investment)

Management Fee	0.64%
Distribution (12b-1) Fees	NONE
Other Expenses	0.07%
Acquired Fund Fees and Expenses ¹	0.01%
Total Annual Fund Operating Expenses	0.72%

¹ *Acquired Fund Fees and Expenses are not included as expenses in the Ratio of Net Expenses to Average Net Assets found in the "Financial Highlights" section of this prospectus.*

EXAMPLE:

The Example is intended to help you compare the cost of investing in the Fund with the cost of investing in other mutual funds. The Example assumes that you invest \$10,000 in the Fund for the time period indicated and then redeem all of your shares at the end of those periods. The Example also assumes that your investment has a 5% return each year and that the Fund's operating expenses remain the same. Although your actual costs may be higher or lower, based on these assumptions your costs would be:

James Balanced:	1 Year	3 Years	5 Years	10 Years
Golden Rainbow Fund	\$74	\$230	\$400	\$894

Portfolio Turnover: The Fund pays transaction costs, such as commissions, when it buys and sells securities (or "turns over" its portfolio). A higher portfolio turnover may indicate higher transaction costs. These costs, which are not reflected in annual fund operating expenses or in the Example, affect the Fund's performance. A higher turnover may also result in more income taxes for a shareholder when Fund shares are held in a taxable account. During the most recent fiscal year, the Fund's portfolio turnover rate was 46% of the average value of its portfolio. The portfolio turnover of the Fund may vary considerably from year to year. From time to time, the Fund's portfolio turnover rate may be relatively high, as compared to other mutual funds, and the Fund currently anticipates the rate may exceed 100% percent in the near future.

PRINCIPAL INVESTMENT STRATEGIES

Under normal circumstances, the Fund invests primarily in equity securities of foreign and domestic companies that the Adviser believes are undervalued, and in fixed income securities. The Fund will normally hold both equity securities and fixed income securities, with at least 25% of its assets in equity securities and at least 25% of its assets in fixed income securities.

Equity securities that the Fund will principally invest in are common stocks, preferred stocks and exchange traded funds (“ETFs”) that invest primarily in equity securities. Some or all of the equity portion of the Fund may be invested in small and micro capitalization companies. Fixed income securities that the Fund will principally invest in are U.S. government securities, corporate bonds, municipal bonds and/or sovereign bonds of any maturity, as well as ETFs that invest primarily in such securities. Any non-U.S. government securities in the Fund’s portfolio will consist primarily of issues rated “Baa2” or better by Moody’s Investors Service, Inc. (“Moody’s”) or “BBB” or better by Standard & Poor’s Ratings Group (“S&P”) and unrated securities determined by the Adviser to be of equivalent quality, as well as high quality money market instruments. The Fund will attempt to provide total return in excess of the rate of inflation over the long term (3 to 5 years). The Fund may add more securities to the portfolio to help increase performance and allow the sector weights to vary according to the number of highly ranked securities in that sector.

PRINCIPAL RISKS

All investments carry a certain amount of risk and the Fund cannot guarantee that it will achieve its investment objective. An investment in the Fund is not a deposit or obligation of any bank, is not endorsed or guaranteed by any bank, and is not insured by the Federal Deposit Insurance Corporation (FDIC) or any other government agency. You may lose money by investing in the Fund. Below are the main risks of investing in the Fund.

Equity Market Risk: Overall stock market risks may affect the value of the Fund. Factors such as domestic economic growth and market conditions, interest rate levels and political events affect the securities markets. When the value of the Fund’s investments goes down, your investment in the Fund decreases in value and you could lose money.

Exchange Traded Fund Risk: An ETF may trade at a discount to its net asset value. Investors in the Fund will indirectly bear fees and expenses charged by the underlying ETFs in which the Fund invests in addition to the Fund’s direct fees and expenses. The Fund will also incur brokerage costs when it purchases shares of ETFs. In addition, the Fund will be affected by losses of the underlying ETF and the level of risk arising from the investment practices of the underlying ETF. Inverse and leveraged ETFs use investment techniques and financial instruments that may be considered aggressive, including the use of derivative transactions and short selling techniques. To the extent that the Fund invests in ETFs that invest in commodities, the demand and supply of these commodities may fluctuate widely. Commodity ETFs may use derivatives, which exposes them to further risks, including counterparty risk (i.e., the risk that the institution on the other side of the trade will default).

Fixed Income Risk: The Fund invests in fixed income securities. These securities will increase or decrease in value based on changes in interest rates. If rates increase, the value of the Fund’s fixed income securities will generally decline, and those securities with longer terms generally will decline more. Your investment will decline in value if the value of the Fund’s investments decreases. Investors should be aware that fixed income yields at or close to historic lows present enhanced price risk should interest rates rise considerably from these low levels. Price volatility at low yields is greater than investors may be used to when interest rates are at levels considered normal in an historical sense. There is a risk that issuers and counterparties will not make payments on fixed income securities and repurchase agreements held by the Fund. Such defaults could result in losses to the Fund. Securities with lower credit quality have a greater risk of default. In addition, the credit quality of securities held by

the Fund may be lowered if an issuer's financial condition changes. Lower credit quality may lead to greater volatility in the price of a security and of shares of the Fund. Lower credit quality also may affect liquidity and make it difficult for the Fund to sell the security. Recent financial trends and regulatory changes have created a fixed income market with lower dealer capacity relative to the asset size of some fixed income markets. This may lead to increased trading costs, decreased liquidity and greater market volatility for some fixed income assets in general, especially lower quality bonds. Our Funds do not generally buy non-investment grade bonds.

Foreign Investment Risk: Foreign investing involves risks not typically associated with U.S. investments. These risks include, among others, adverse fluctuations in foreign currency values as well as adverse political, social and economic developments affecting a foreign country. In addition, foreign investing involves less publicly available information, and more volatile or less liquid securities markets. Investments in foreign countries could be affected by factors not present in the U.S., such as restrictions on receiving the investment proceeds from a foreign country, foreign tax laws and potential difficulties in enforcing contractual obligations. Foreign accounting may be less transparent than U.S. accounting practices and foreign regulation may be inadequate or irregular. Owning foreign securities could cause the Fund's performance to fluctuate more than if it held only U.S. securities. This Fund may hold a significant percentage of its assets in foreign securities, including global shares, ADRs and ETFs that hold such securities. This will make portfolio returns more correlated to fluctuations in the U.S. dollar versus foreign currencies and to geopolitical events outside of the United States. Ongoing concerns regarding the economies of certain European countries and/or their sovereign debt, as well as the possibility that one or more countries might leave the European Union (the "EU"), create risks for investing in the EU. The risk of investing in securities in the European markets may also be heightened due to the referendum in which the United Kingdom (the "UK") voted to exit the EU (known as "Brexit"). While the full impact of Brexit is unknown, the current uncertainty and related future developments could have a negative impact on both the UK economy and the economies of other countries in Europe, as well as greater volatility in the global financial and currency markets.

Management Risk: The Adviser's judgments about the attractiveness, value and potential appreciation of a particular asset class or individual security in which the Fund invests may prove to be incorrect. The Fund may experience losses regardless of the overall performance of the market.

Municipal Securities Risk: The power or ability of an issuer to make principal and interest payments on municipal securities may be materially adversely affected by economic conditions, litigation or other factors. The Fund's right to receive principal and interest payments may be subject to the provisions of bankruptcy, insolvency and other laws affecting the rights and remedies of creditors, as well as laws, if any, which may be enacted by Congress or state legislatures extending the time for payment of principal and/or interest or imposing other constraints upon the enforcement of such obligations. In addition, substantial changes in federal income tax laws could cause municipal security prices to decline because the demand for municipal securities is strongly influenced by the value of tax exempt income to investors.

Portfolio Turnover Risk: The Fund may have a higher portfolio turnover rate. A high portfolio turnover rate can result in increased brokerage commission costs and may expose taxable shareholders to potentially larger or smaller current income tax liability.

Sector Risk: Equity securities within the same group of industries may decline in price due to sector-specific market or economic developments. If the Adviser invests a significant portion of the Fund's assets in a particular sector, the Fund is subject to the risk that companies in the same sector are likely to react similarly to legislative or regulatory changes, adverse market conditions and/or increased competition affecting that market segment. This may cause the Fund's net asset value to fluctuate more than that of a fund that does not concentrate in a particular sector.

Small Cap and Micro Cap Company Risk: Smaller capitalization companies may experience higher failure rates than do larger capitalization companies. In addition, smaller companies may be more vulnerable to economic, market and industry changes. As a result, share price changes may be more sudden or erratic than the prices of other equity securities, especially over the short term. Such companies may have limited product lines, markets or financial resources and may lack management depth. The trading volume of securities of smaller capitalization companies is normally less than that of larger capitalization companies, and therefore may disproportionately affect their market price, tending to make them fall more in response to selling pressure than is the case with larger capitalization companies. Some small capitalization stocks may be illiquid. These risks may be enhanced for micro cap securities. Many micro cap companies tend to be new and have no proven track record. Some of these companies have no assets or operations, while others have products and services that are still in development or have yet to be tested in the market. Because micro cap stocks trade in low volumes, any size of trade can have a large percentage impact on the price of the stock.

Sovereign Debt Risk: The Fund may invest in sovereign debt obligations. Investment in sovereign debt obligations involves special risks not present in corporate debt obligations. The issuer of the sovereign debt or the governmental authorities that control the repayment of the debt may be unable or unwilling to repay principal or interest when due, and the Fund may have limited recourse in the event of a default. During periods of economic uncertainty, the market prices of sovereign debt, and the Fund's net asset value, may be more volatile than prices of U.S. debt obligations.

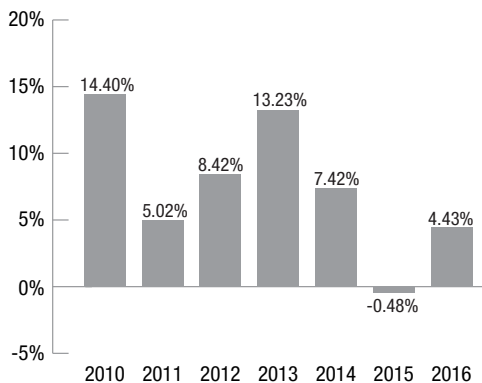
PERFORMANCE

The bar chart and performance table below illustrate the variability of the returns of the Institutional Class shares of the Fund, which provides some indication of the risks of investing in the Fund by showing changes in the performance of the Institutional Class shares of the Fund from year to year and by showing how the average annual total returns of the Institutional Class shares of the Fund over time compare with the returns of a broad-based securities market index. Of course, the past performance of the Institutional Class shares of the Fund is not necessarily an indication of how the Institutional Class shares of the Fund will perform in the future. Updated performance information is available at no cost by visiting www.jamesfunds.com or by calling 1-800-99-JAMES (1-800-995-2637).

JAMES BALANCED: GOLDEN RAINBOW FUND

Institutional Class Shares: GLRIX

Annual Total Returns (Institutional Class Shares) (Years ended December 31):



Best Quarter	3rd Quarter 2010	6.70%
Worst Quarter	3rd Quarter 2011	-4.69%

The Fund's Institutional Class year-to-date return as of September 30, 2017 was 3.69%.

Average Annual Total Returns (Institutional Class Shares) (as of December 31, 2016)

James Balanced: Golden Rainbow Fund – Institutional Class	One Year	Five Years	Since Inception (March 2, 2009)
Return Before Taxes	4.43%	6.51%	9.52%
Return after Taxes on Distributions	3.94%	5.78%	8.82%
Return after Taxes on Distributions and Sale of Fund Shares	2.85%	5.05%	7.64%
S&P 500® Index (reflects no deduction for fees, expenses or taxes)	11.96%	14.66%	18.48%
Blended (25% S&P 500® Index; 25% Russell 2000® Index; 50% Barclays Capital Intermediate Government/Credit Bond Index) (reflects no deduction for fees, expenses or taxes)	9.45%	8.28%	11.42%

After-tax returns are calculated using the highest individual federal marginal income tax rates then in effect for the character of income in question (as ordinary income or long-term gain) and do not reflect the impact of state and local taxes. Actual after-tax returns depend on a shareholder's tax situation and may differ from those shown. The after-tax returns are not relevant if you hold your Fund shares in tax-deferred arrangements, such as 401(k) plans or individual retirement accounts ("IRA").

PORTFOLIO MANAGEMENT

James Investment Research, Inc. (the "Adviser") is the investment adviser to the Fund.

The Fund is managed by an investment committee of the Adviser consisting of the following nine members:

Dr. Frank James, PhD Senior Advisor Since 2016	Barry James, CFA, CIC Portfolio Manager Since 2009	Ann M. Shaw, CFP Portfolio Manager Since 2009	Thomas L. Mangan Portfolio Manager Since 2009
David W. James, CFA Portfolio Manager Since 2009	R. Brian Culpepper Portfolio Manager Since 2009	Brian Shepardson, CFA, CIC Portfolio Manager Since 2009	Trent D. Dysert, CFA Portfolio Manager Since 2014
Matthew G. Watson, CFA, CPA Portfolio Manager Since 2014			

BUYING AND SELLING FUND SHARES

Minimum Initial Investment	Minimum Additional Investment
\$50,000	None

You can buy and redeem shares of the Fund on any day the NYSE is open for business through an eligible institutional intermediary (a registered investment adviser or bank trust department that has established an omnibus account with the Fund to hold shares owned by clients), if you are a client of the Adviser, or if you are a Trustee or Officer of the Fund. Employees of the Adviser, the Funds' Trustees and employees of the Funds' other service providers are eligible to buy shares of these Funds directly through the Transfer Agent or through third party intermediaries.

DIVIDENDS, CAPITAL GAINS AND TAXES

A Fund's distributions may be taxable as ordinary income or capital gains, or, in some cases, qualified dividend income subject to tax at maximum federal rates that apply to long-term capital gains, except when your investment is in an IRA, 401(k) or other tax-advantaged investment plan. Subsequent withdrawals from such a tax-advantaged investment plan may be subject to federal income tax.

POTENTIAL CONFLICTS OF INTEREST

If you purchase a Fund through an eligible institutional intermediary, the Fund and its related companies may pay the intermediary for the sale of Fund shares and related services. These payments may create a conflict of interest by influencing the intermediary and your salesperson to recommend the Fund over another investment. Ask your salesperson or visit your financial intermediary's website for more information.

